

INTERNET

TELEPHONE

ELECTRICAL

PLUMBING

KANSAS CITY

CONVENTION CENTER

EXHIBITOR ORDERING GUIDE

YOUR ROADMAP TO
A SUCCESSFUL EVENT



Where
TECHNOLOGY
Meets HOSPITALITY

EXPERTISE

WE HAVE DESIGNED & INSTALLED
MORE NETWORKS
FOR MAJOR TRADESHOWS
THAN ANY OTHER ORGANIZATION

FIRST CLASS CUSTOMER SERVICE

Leading up to the start of your event, our **customer service team will work with you** to ensure all the required information needed to install services is collected prior to your arrival. These items include; verifying your order, providing all pertinent IP and wireless information, collecting a floor plan, advanced payment, and confirmation of all required signatures. We understand **there are a lot of moving parts** when planning to exhibit at a convention and our mission to make this process as easy as possible.

It's our goal to make our team as accessible as possible. All our events are staffed with local team members for you to utilize, helping **ensure network reliability and the delivery of the services you need**. During move-in and show days, our team is available to assist you with your ordered services.

KNOWLEDGEABLE TECHNICAL SUPPORT

Our experienced technicians are **readily available** to perform troubleshooting, installation of additional services, relocations and much more.

Our team will be available **throughout the entire event** to provide you with the show experience you've always envisioned.

REDUNDANCY OF EQUIPMENT

We always have spares on-hand and are network ready. Smart City always keeps network switches and wireless access points on-hand and connected to the network. If a piece of equipment fails, we can replace it immediately with **little to no downtime**.

24/7 NETWORK MONITORING

All ports on the Smart City network are **polled every minute for network stability**. Certified network engineers are on staff in our Network Operations Center during event hours and on call 24/7.





Is the exclusive provider of the following services:

INTERNET

A woman with blonde hair, wearing a black top, is looking at a laptop screen in a modern office setting.

TELEPHONE

A man in a white shirt and black tie is smiling while looking at a laptop screen.

ELECTRICAL

A close-up of a blue power button on a device, with a hand about to press it.

PLUMBING

A close-up of a chrome water faucet with water dripping from the spout.

GAS

A close-up of a metal gas pipe fitting with a threaded end.

Need just a **BASIC** CONNECTION?



Our **SHARED INTERNET SERVICE**, ideal for **LIGHT INTERNET USAGE** such as web browsing and checking email via a wired connection.

SERVICE	INCENTIVE **	BASE
Shared Internet	\$900	\$1,170
Additional Device	\$125	\$175
EQUIPMENT & LABOR	INCENTIVE **	BASE
Switch Rental	\$185	\$225
Patch Cables	\$50	\$65
Labor (Floor Work)	\$125	\$125

* **NOT FOR STREAMING**

** **ORDER 14 DAYS PRIOR TO FIRST DAY OF MOVE-IN TO GET THE INCENTIVE RATE!**

Shared Internet Includes:

- 5 Mbps shared bandwidth for 1 device
- **Routers are not permitted on this service and will not work**
- Each device includes (1) Private IP Address
- Up to 4 additional IP's (devices) may be purchased separately. Additional devices share the same 5 Mbps.
- Ethernet RJ45 Hardline drop and is DHCP (plug and play)

To connect multiple devices to this service a Switch Rental, Patch Cables and Floor Work are required. If more than 5 devices are needed, another main drop (Shared Internet w/ 1 Private IP) is required. An additional 4 devices can then be added to your order.

ORDER NOW >



Order online at:
<https://orders.smartcitynetworks.com>
or call 888.446.6911



What if it's **MISSION CRITICAL?**

Our **DEDICATED WIRED SERVICES** are the **FASTEST AND MOST RELIABLE** way to deliver high quality experiences at your event.

DEDICATED SERVICES	STREAMING			INCENTIVE**	BASE
	SD	HD	UHD		
*2 Mbps Dedicated	1	N/A	N/A	\$1,800	\$2,340
*5 Mbps Dedicated	2	1	N/A	\$4,500	\$5,850
10 Mbps Dedicated	3	2	N/A	\$8,000	\$10,400
15 Mbps Dedicated	5	3	N/A	\$12,000	\$15,600
20 Mbps Dedicated	5	3	N/A	\$14,000	N/A
25 Mbps Dedicated	6	4	1	\$17,500	N/A

**** ORDER 14 DAYS PRIOR TO FIRST DAY OF MOVE-IN TO GET THE INCENTIVE RATE!**

Whether you are setting up your own booth Wi-Fi, Webcasting, HD Streaming, Gaming or require Point to Point connectivity, Dedicated Internet is the way to go!

Dedicated Services Include:

- Ethernet (1) RJ45 Hardline drop with VLAN
- **Wireless and Hardline routers are permitted**
- (5) Static Private IP addresses (*comes with (3) Static Private IP addresses)
- Speeds up to 1 Gbps available
- Additional Static IP addresses available for purchase

ORDER NOW >



Order online at:
<https://orders.smartcitynetworks.com>
or call 888.446.6911



NEED TELEPHONE OR CONFERENCE SERVICES?

Our **TELEPHONE SERVICES** provide reliable **VOICE SERVICE** solutions for Single Line and Conference calls.

VOICE SERVICES	INCENTIVE*	BASE
Single Line Telephone - Without Device	\$250	\$300
Single Line Telephone - With Device	\$275	\$345
Polycom Speaker Phone - With Device	\$465	\$575
Direct Dial	\$300	\$350

*** ORDER 14 DAYS PRIOR TO FIRST DAY OF MOVE-IN TO GET THE INCENTIVE RATE!**

We have specialized in telephone services for over 30 years. Smart City provides reliable phone services with crystal clear connections. Our telephone services can be used for reception check-in, conference calls in meeting rooms and for credit card processing machines.

Telephone Service Information:

- Single Line telephones include (1) Main number and (1) rollover line
- Polycom speakerphones require power source, **electrical** services may need to be ordered separately
- Domestic Long Distance is included
- International calling is billed separately

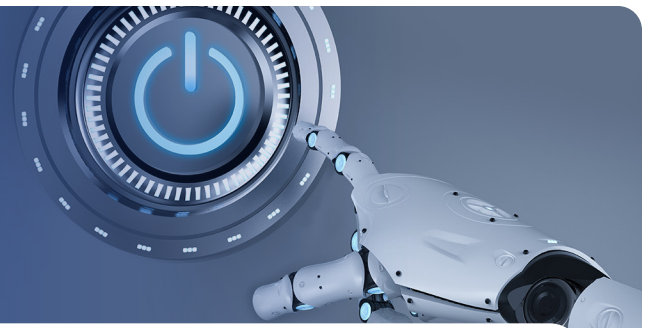
ORDER NOW >



Order online at:
<https://orders.smartcitynetworks.com>
or call 888.446.6911



READY TO POWER UP YOUR EXPERIENCE?



DUPLEX OUTLETS	INCENTIVE*	BASE
10 AMP (1-1000 Watts)	\$100	\$130
15 AMP (1001-2000 Watts)	\$150	\$175
20 AMP (Dedicated Outlet)	\$165	\$190
208 VOLT SERVICES	INCENTIVE*	BASE
20 AMP, Single Phase	\$300	\$370
30 AMP, Single Phase	\$330	\$400
40 AMP, Single Phase	\$360	\$430
60 AMP, Single Phase	\$549	\$714
100 AMP, Single Phase	\$813	\$1,057
150 AMP, Single Phase	\$1,197	\$1,556
200 AMP, Single Phase	\$1,428	\$1,856
208 VOLT SERVICES	INCENTIVE*	BASE
20 AMP, Three Phase	\$450	\$475
30 AMP, Three Phase	\$480	\$500
40 AMP, Three Phase	\$510	\$580
50 AMP, Three Phase	\$550	\$620
60 AMP, Three Phase	\$600	\$700
100 AMP, Three Phase	\$1,239	\$1,611
150 AMP, Three Phase	\$1,733	\$2,253
200 AMP, Three Phase	\$2,301	\$2,991
400 AMP, Three Phase	\$3,500	\$3,850
Additional Services	INCENTIVE*	BASE
Power Strip	\$50	\$65

POWER REQUIREMENTS EXAMPLES ON DUPLEX/120 VOLT OUTLETS

- Blender..... 375 Watts
- Cash Register..... 500 Watts
- Coffee Pot, Standard 600-1000 Watts
- Coffee Pot, Large 1500-2000 Watts
- Computer, Laptop 300-500 Watts
- Computer, Desktop 500-750 Watts
- Computer Monitor, Reg... 200 Watts
- Computer Monitor, Flat... 250-500 Watts
- Crock Pot 1000-1500 Watts
- Hotplate, Single Element. 1000 Watts
- Hotplate, Dual Element... 2000 Watts
- Lighting, Halogen..... 100-500 Watts, Per Bulb
- Lighting, Conventional..... 60-250 Watts, Per Bulb
- Popcorn Maker, Small..... 1000 Watts
- Popcorn Maker, Large..... 1500-2000 Watts
- Printer, Ink Jet..... 750-1000 Watts
- Printer, Laser 1500-2000 Watts
- Toaster..... 1500 Watts
- TV, Standard..... 200-500 Watts
- TV, LCD 500-1000 Watts
- TV, Plasma 1000-1500 Watts

***ORDER 14 DAYS PRIOR TO FIRST DAY OF MOVE-IN TO GET THE INCENTIVE RATE!**

TIPS:

- Rates include labor and material to bring services (up to 60 AMP) to the rear of standard booth or to the nearest floor port inside an island booth. There are additional charges for services greater than 60 AMPS.
- All other work performed within a booth to place services in other locations will be charged on a time and material basis. A connect and disconnect fee will be incurred for all connected service, whether connected direct or otherwise.
- Generators are not permitted.

ORDER NOW



Order online at:
<https://orders.smartcitynetworks.com>
 or call 888.446.6911



ARE PLUMBING SERVICES AVAILABLE?



Our **PLUMBING SERVICES** provide **WATER SERVICES** for sinks, pools or spas.

WATER	INCENTIVE *	BASE
Water Connection	\$250	\$400
Additional Connection	\$90	\$112
DRAINAGE	INCENTIVE *	BASE
Drainage Connection	\$250	\$400
Additional Connection	\$90	\$120
FILL AND DRAIN	INCENTIVE *	BASE
1-15 Gallons	\$60	\$78
16-70 Gallons	\$75	\$100
71-100 Gallons	\$100	\$125
101-200 Gallons	\$150	\$180
201-300 Gallons	\$175	\$200
301-400 Gallons	\$210	\$250
401-500 Gallons	\$240	\$275
501-1000 Gallons	\$500	\$550
Additional 500 Gallons	\$95	\$105

Fill and Drain one time only, labor charges apply for additional fills.

***ORDER 14 DAYS PRIOR TO FIRST DAY OF MOVE-IN TO GET THE INCENTIVE RATE!**

TIPS:

- Water services come from floor pockets
- If hot water is needed, rental of hot water heater is required
- Pricing includes Labor and Material for each service

ORDER NOW >



Order online at:
<https://orders.smartcitynetworks.com>
 or call 888.446.6911



DO WE OFFER COMPRESSED AIR?

Our **PLUMBING SERVICES** provide reliable **COMPRESSED AIR** and **GAS** for Robotics, Pneumatic Tools and Machinery.

COMPRESSED AIR	INCENTIVE*	BASE
Compressed Air Connection	\$250	\$400
Additional Connection	\$110	\$137
For any compressed air special requirements please call for quote.		
GAS	INCENTIVE*	BASE
Gas Connection	\$250	\$400

***ORDER 14 DAYS PRIOR TO FIRST DAY OF MOVE-IN TO GET THE INCENTIVE RATE!**

- Labor and Material not included with any plumbing services

ORDER NOW >



Order online at:
<https://orders.smartcitynetworks.com>
or call 888.446.6911



FAQ

Frequently Asked Questions

DOES SMART CITY NETWORKS PROVIDE COMPLIMENTARY WI-FI?

Yes! Smart City Networks provides complimentary Wi-Fi in most designated public areas of the facility, such as the concourse lobbies and food courts. Check with your specific venue for locations. This service is made available to approximately 30 million guests, visitors, and attendees at our convention centers throughout the country. There is no requirement to purchase a Smart City Networks service in order to take advantage of the complimentary Wi-Fi.

WHY DOESN'T SMART CITY NETWORKS PROVIDE COMPLIMENTARY WI-FI IN THE EXHIBIT HALLS?

Exhibit halls are not public areas since this space is typically licensed to a company, government agency, or trade association for a private event. The space license agreement governs the availability of a range of services for the event and the license may or may not call for complimentary Wi-Fi services.

WILL MY PERSONAL HOTSPOT (MI-FI) WORK IN YOUR BUILDING?

Yes – however, the capability of your personal mobile hotspot is limited by your cellular carrier by the spectrum and Internet bandwidth capacity they have made available. Cellular carrier signals penetrate into a facility either from a nearby cellular tower or via an in-building Distributed Antenna System (DAS). It is important to remember that your personal mobile hotspot is obtaining a wireless signal from a shared cellular network, so service may be disrupted or become unreliable due to user density and demand on the carrier's network. In all cases, you have the option to take advantage of the complimentary Wi-Fi throughout the public areas, or if you choose, you can purchase an upgraded package based on your service requirements.

WHAT MUST BE IDENTIFIED ON MY FLOORPLANS?

Floor plans should include the surrounding booth numbers for orientation, measurements and easy identification of all required end location(s). Be sure to distinguish your main distribution line (MDL) and additional patch cables. Please reference Smart City's Communications Floorplan Worksheet.

TIP: Most of our venue's data jacks originate from a floor pocket. Be sure to submit a completed floorplan prior to the first day show move-in to avoid any additional labor charges.



Order online at:
<https://orders.smartcitynetworks.com>
or call 888.446.6911

DO YOU OFFER INCENTIVE RATES?

Yes! Orders received along with payment by the incentive deadline date will receive our early incentive pricing.

WHY ARE ROUTERS NOT ALLOWED ON A SHARED NETWORK?

Many times, Smart City has found that routers on a shared network are installed incorrectly, which can cause problems for other users of the network. Additionally, an accurate count of the number of devices on the network is required to determine the appropriate network size and bandwidth available to the network. For more information and to request the build-out of a special system to meet your needs, contact our team today for a quote.

CAN I PROVIDE MY OWN SWITCH AND/OR CABLING?

Yes, you can provide your own switch and patch cables for in booth cabling. Unless otherwise mandated by the venue.

Please Note: Connectivity can be guaranteed only to the point where Smart City Networks' services originate in the booth. Smart City Networks cannot guarantee service on customer/exhibitor-provided cable(s) and/or equipment. Any request for trouble diagnosis or problem resolution found not to be the fault of Smart City Networks (such as faulty equipment or damaged cable) may be billed to the exhibitor at the prevailing labor rate.

HOW MUCH BANDWIDTH DO I NEED?

To identify how much bandwidth you should require, please reach out to a technical representative in your organization, review your program specifications listed with any demonstrations or downloads you plan to run.

WHAT DOES SD, HD, AND UHD STAND FOR?

SD, HD, and UHD are the abbreviated names of three video streaming formats. The basic difference between each of the formats is the number of pixels comprising the video image. The greater the pixel count the sharper and more detailed your video will be.

FORMAT	RESOLUTION	BANDWIDTH REQUIRED
Standard Definition (SD)	720x480	3.0-5.0 Mbps
High Definition (HD)	1280x720 & 1920x1080	5.0-8.0 Mbps
Ultra High Definition (UHD)	3840x2160	25 Mbps

Our Promise ★★★★★

Smart City Networks is “Where Technology Meets Hospitality”. By anticipating and responding to our clients’ needs, we continue to lead the nation in providing quality advanced technology and telecommunication solutions to the trade show and event industry. We work to build personal relationships with our clients because excellent service requires an exceptional and long-lasting commitment.

“IN A HECTIC WORLD, WE PROVIDE PEACE OF MIND.”